

Build Your Own Bar System

Walk-Up Wall Bars, Standard

Note: If matching with a Front Bar, subtract 16" from the width of the Front Bar, or 8" from a Flush-Cut Front Bar to find the width of the Walk Up Wall Bar.



1. Select Desired Style:



M
Monroe



N
Nassau

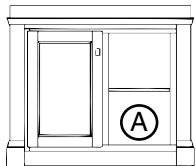


R
Richmond

2. Select Desired Size & Options:

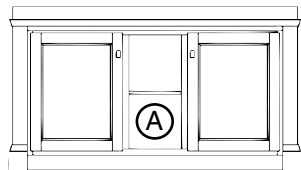
Cabinet Options

The line drawings to the left show letters inside circles indicating cabinet positions. If you would like one of the options shown below in the space marked with that letter, please write the letter in the circle beneath the pictured option. Note: Adjustable shelf is standard.



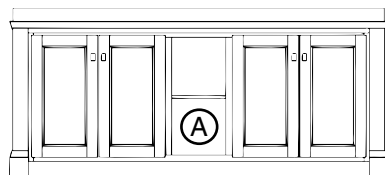
44"
 50"

OPTIONS: A Cabinet



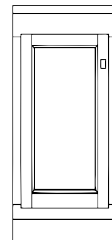
56"
 62"
 68"
 74"

OPTIONS: A Cabinet

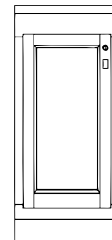
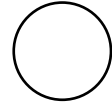


80"
 86"
 92"
 98"

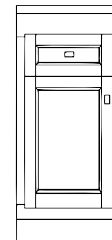
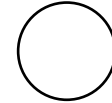
OPTIONS: A Cabinet



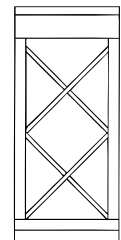
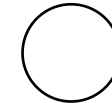
Non-Locking Door



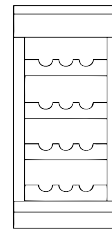
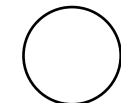
Locking Door



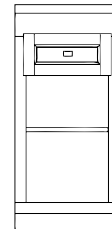
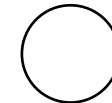
Drawer Over Door



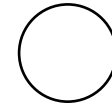
X-Style Wine Rack



Bottle Cradle Rack



Drawer Over X-Rack



3. Select Height

Other Options:

- Black Laminate Counter Top
 Raised Panels (N/A Rutherford)

4. Specify Finish:

Wood Finish Color: _____

Name: _____ City, State: _____

Phone Number: _____ Notes: _____