

Build Your Own Bar System



Back Bars, Deluxe (Refrigerator Ready)

Note: If matching with a Front Bar, subtract 16" from the width of the Front Bar, or 8" from a Flush-Cut Front Bar to find the width of the Back Bar.
Width does not include crown moulding.

1. Select Desired Style:



M
Monroe

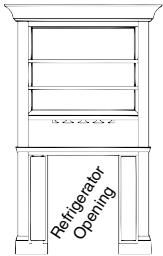


N
Nassau



R
Richmond

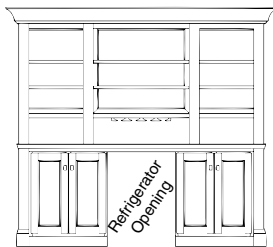
2. Select Desired Size & Options:



44"
 50"



56"
 62"
 68"
 74"



80"
 86"
 92"
 98"

No Cabinet Options Available

Note: Refrigerator Opening = 34.5"H x 24"W x 24"D

3. Select Height & Other Options:

Approx. 84" Height

Black Laminate Counter Top

Approx. 92" Height

Raised Panels (N/A Rutherford)

4. Specify Finish:

Wood Finish Color: _____

Name: _____ City, State: _____

Phone Number: _____ Notes: _____